



K0131



K0128



K0126



K0125



K0124



K0123



K0122



K0121



K0120



K0119



K0118



K0117



K0116



K0115



K0114



K0113



K0112



K0111



K0110



K0109



K0108



K0107



K0106



K0105



K0103



K0102



K0101



K0100



K0099



K0095



K0094



K0093



K0092



K0091



K0090



K0089



K0088



K0075



K0063



K0062



K0059



K0056



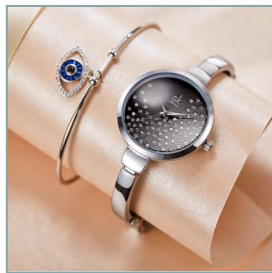
K0039



K0006



Model: 11K0131L
 Type: Women's Watch
 Movement: PC21
 Case Material: Alloy
 Strap Material: Metal
 Clasp: Jewelry Clasp
 Water Resistance: 3ATM
 Dial Diameter: 32MM
 Dial Thickness: 8.0MM
 Strap Width: 16MM
 Watch Net Weight: 40.5g
 Retail Price: 248/288RMB



- ◆ Sunburst pattern with diamond surface
- ◆ Full light alloy strap
- ◆ Japanese imported movement
- ◆ High-strength mineral glass



Model: 11K0128L

Watch type: Women's watch

Movement: PC21

Case material: Alloy

Strap material: PU leather strap

Buckle: Square steel buckle

Water resistance: 3ATM

Dial diameter: 34MM

Dial thickness: 8.0MM

Strap width: 16MM

Net weight of the watch: 29.5g

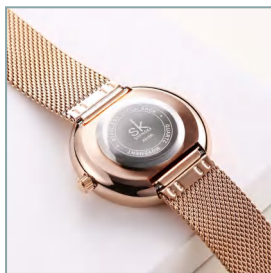
Hang tag price: 188RMB



- ◆ Polka dot silk-printed dial
- ◆ Comfortable leather strap
- ◆ Japanese imported movement
- ◆ High-strength mineral glass



Model: 11K0126L
Type: Women's Watch
Movement: PC20
Case Material: Alloy
Strap Material: Stainless Steel Mesh Strap
Buckle: Hook Buckle
Water Resistance: 3ATM
Dial Diameter: 34MM
Dial Thickness: 8.0MM
Strap Width: 16MM
Watch Weight: 53.0g
Price Tag: 208/228 RMB



◆ Silk-screened surface

◆ Stainless steel woven belt

◆ Japanese imported movement

◆ High-strength mineral glass



Model: 11K0125L
Type: Women's Watch
Movement: PC20
Case Material: Alloy
Strap Material: Steel Mesh
Clasp: Hook Buckle
Water Resistance: 3ATM
Dial Diameter: 34MM
Dial Thickness: 8.0MM
Strap Width: 12MM
Watch Weight: 53.20g
Retail Price: 208/228RMB



◆ Sunray dial

◆ Stainless steel mesh strap

◆ Japanese imported movement

◆ High-strength mineral glass



Model: 11K0124L
 Watch type: Women's watch
 Movement: PC20
 Case material: Alloy
 Strap material: PU leather
 Buckle: Square steel buckle
 Waterproof: 3ATM
 Dial diameter: 32.5MM
 Dial thickness: 7.0MM
 Strap width: 12MM
 Watch net weight: 25.0g
 Hang tag price: 208/228RMB



- ◆ Shimmering surface of the starry sky
- ◆ Comfortable strap
- ◆ Japanese imported movement
- ◆ High-strength mineral glass



Model: 11K0123L
Watch type: Women's watch
Movement: PC20
Case material: Alloy
Strap material: PU leather strap
Clasp: Square steel buckle
Water resistance: 3ATM
Dial diameter: 32.5MM
Dial thickness: 7.0 MM
Strap width: 12MM
Net weight of the watch:
24.5g
Retail price: 208RMB



- ◆ 3D printed raised flower with glitter surface
- ◆ Comfortable belt
- ◆ Japanese imported movement
- ◆ High-strength mineral glass



Model: 11K0122L
 Watch Type: Women's Watch
 Movement: PC20
 Case Material: Alloy
 Strap Material: PU Leather Strap
 Buckle: Square Steel Buckle
 Water Resistance: 3ATM
 Dial Diameter: 34.5MM
 Dial Thickness: 6.5MM
 Strap Width: 14MM
 Net Weight of the Watch: 26.3g
 Hangtag Price: 228RMB



- ◆ Iridescent river shell surface
- ◆ Solid color floral pattern design
- ◆ Japanese imported movement
- ◆ High-strength mineral glass



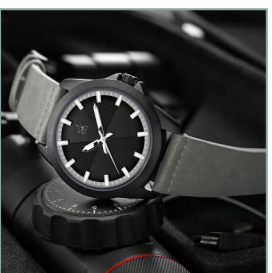
Model: 11K0121L
 Watch type: Women's watch
 Movement: PC20
 Case material: Alloy
 Strap material: PU leather strap
 Buckle: Square steel buckle
 Water resistance: 3ATM
 Dial diameter: 38MM
 Dial thickness: 6.5MM
 Strap width: 18MM
 Net weight of the watch: 32.7g
 Price tag: 188/208 RMB



- ◆ Sunburst dial surface
- ◆ Silk-printed checked strap
- ◆ Japanese imported movement
- ◆ High-strength mineral glass



Model: 11K0120L
Watch type: Women's watch
Movement: PC21
Case material: Alloy
Strap material: PU leather strap
Clasp: Square steel clasp
Water resistance: 3ATM
Dial diameter: 43MM
Dial thickness: 9.0MM
Strap width: 22MM
Net weight of the watch:
55.8g
Hang tag price: 248RMB



◆ Concave ridged surface

◆ White luminous hands

◆ Japanese imported movement

◆ High-strength mineral glass



Model: 11K0119L
Watch Type: Women's watch
Movement: PC21
Case Material: Alloy
Strap Material: Steel mesh strap
Clasp: Hook buckle
Waterproof: 3ATM
Dial Diameter: 19.5*27.0MM
Dial Thickness: 6.5MM
Strap Width: 12MM
Watch Net Weight: 40.0g
Retail Price: 208/268 RMB



- ◆ Square watch design
- ◆ Sunburst surface
- ◆ Japanese imported movement
- ◆ High-strength mineral glass



Model: 11K0118L
Type: Women's watch
Movement: PC20
Case material: Alloy
Strap material: PU leather
Clasp: Square steel buckle
Water resistance: 3ATM
Dial diameter: 31MM
Dial thickness: 6.5MM
Strap width: 14MM
Watch weight: 30.0g
Hangtag price: 168/188RMB



◆ Butterfly-shaped dial ◆ Comfortable strap ◆ Japanese imported movement ◆ High-strength mineral glass



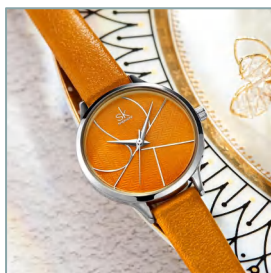
Model: 11K0117L
 Watch Type: Women's Watch
 Movement: PC21
 Case Material: Alloy
 Strap Material: PU Leather
 Clasp: Square Steel Buckle
 Water Resistance: 3ATM
 Dial Diameter: 31MM
 Dial Thickness: 6.5MM
 Strap Width: 12MM
 Watch Net Weight: 20.0g
 Retail Price: 188RMB



- ◆ Holographic glitter surface
- ◆ Comfortable strap
- ◆ Japanese imported movement
- ◆ High-strength mineral glass



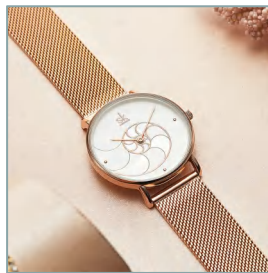
Model: 11K0116L
Watch type: Women's watch
Movement: PC21
Case material: Alloy
Strap material: PU leather strap
Buckle: Square steel buckle
Waterproof: 3ATM
Dial diameter: 31MM
Dial thickness: 6.5MM
Strap width: 12MM
Net weight of the watch: 19.5g
Hang tag price: 168RMB



◆ Creative design surface ◆ Comfortable strap ◆ Japanese imported movement ◆ High-strength mineral glass



Model: 11K0115L
Type: Women's Watch
Movement: PC20
Case Material: Alloy
Strap Material: Stainless Steel Mesh
Clasp: Hook Clasp
Water Resistance: 3ATM
Dial Diameter: 36MM
Dial Thickness: 6.5MM
Strap Width: 18MM
Net Weight: 60.4g
Retail Price: 218/298RMB



- ◆ Iridescent river shell surface
- ◆ Stainless steel woven steel mesh belt
- ◆ Japanese imported movement
- ◆ High-strength mineral glass



Model: 11K0114L
Type: Women's Watch
Movement: PC20
Case Material: Alloy
Strap Material: Steel Mesh Strap
Clasp: Hook Buckle
Waterproof: 3ATM
Dial Diameter: 36MM
Dial Thickness: 7.5MM
Strap Width: 16MM
Net Weight: 58g
Price Tag: 288RMB



- ◆ Sun pattern surface
- ◆ Silk screen design
- ◆ Japanese imported movement
- ◆ High-strength mineral glass



Model: 11K0113L
Watch Type: Women's Watch
Movement: PC20
Case Material: Alloy
Strap Material: PU Leather
Strap
Buckle: Square Steel
Buckle
Waterproof: 3ATM
Dial Diameter: 34MM
Dial Thickness: 8.0MM
Strap Width: 16MM
Watch Weight: 27.5g
Retail Price: 288/308RMB



- ◆ Sparkling holographic surface
- ◆ Printed design
- ◆ Japanese imported movement
- ◆ High-strength mineral glass



Model: 11K0112L
 Watch type: Women's watch
 Movement: PC20
 Case material: Alloy
 Strap material: Metal
 Clasp: Double push button clasp
 Water resistance: 3ATM
 Dial diameter: 32MM
 Dial thickness: 8.0MM
 Strap width: 14MM
 Watch net weight: 64.0g
 Price tag: 288/308RMB



◆ Iridescent river shell surface

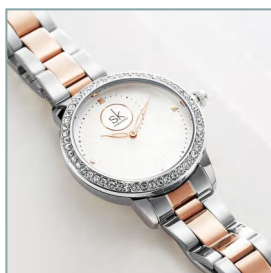
◆ Metallic strap for the watch

◆ Japanese imported movement

◆ High-strength mineral glass



Model: 11K0111L
 Type: Women's Watch
 Movement: PC20
 Case Material: Alloy
 Strap Material: Steel
 Clasp: Double-Press Box Clasp
 Water Resistance: 3ATM
 Dial Diameter: 36MM
 Dial Thickness: 7.0MM
 Strap Width: 16MM
 Watch Weight: 67.0g
 Retail Price: 268/288RMB



◆ Bezel set with diamonds design

◆ Stainless steel single bead strap

◆ Japanese imported movement

◆ High-strength mineral glass



Model: 11K0110L
 Type: Women's watch
 Movement: PC21
 Case material: Alloy
 Strap material: PU leather strap/Steel mesh strap
 Buckle: Square steel buckle/Clasp
 Water resistance: 3ATM
 Dial diameter: 38MM
 Dial thickness: 6.5MM
 Strap width: 18MM
 Watch weight: 35.4g/67.8g
 Price tag: 188/238RMB



- ◆ Simple hydraulic gauge surface
- ◆ Comfortable strap
- ◆ Japanese imported movement
- ◆ High-strength mineral glass



Model: 11K0109L
Type: Women's watch
Movement: PC20
Case material: Alloy
Strap material: PU leather strap
Buckle: Square steel buckle
Water resistance: 3ATM
Dial diameter: 32.5MM
Dial thickness: 7.0MM
Strap width: 12MM
Watch net weight: 22.5g
Hangtag price: 208/228RMB



◆ Holographic glitter surface

◆ Comfortable strap

◆ Japanese imported movement

◆ High-strength mineral glass



Model: 11K0108L
Type: Women's Watch
Movement: PC21
Case Material: Alloy
Strap Material: PU Leather
Strap
Buckle: Square Steel
Buckle
Water Resistance: 3ATM
Dial Diameter: 32MM
Dial Thickness: 6.5MM
Strap Width: 16MM
Watch Net Weight: 24.5g
Hangtag Price: 158/168RMB



◆ 3D printed leaf surface ◆ Comfortable belt ◆ Japanese imported ◆ High-strength mineral glass movement



Model Number: 11K0107L
Watch Type: Women's Watch
Movement: PC21
Case Material: Alloy
Strap Material: PU Leather
Clasp: Square Steel Buckle
Water Resistance: 3ATM
Dial Diameter: 39MM
Dial Thickness: 7.0MM
Strap Width: 20MM
Watch Net Weight: 35.9g
Price Tag: 168 RMB



- ◆ Mirror dial design
- ◆ Comfortable strap
- ◆ Japanese imported movement
- ◆ High-strength mineral glass



Model: 11K0106L
Type: Women's Watch
Movement: PC20
Case Material: Alloy
Strap Material: Stainless Steel Mesh
Clasp: Hook Buckle
Water Resistance: 3ATM
Dial Diameter: 36MM
Dial Thickness: 6.5MM
Strap Width: 18MM
Watch Net Weight: 63.3g
Retail Price: 298RMB



- ◆ Concept dial design
- ◆ Stainless steel mesh strap
- ◆ Japanese imported movement
- ◆ High-strength mineral glass



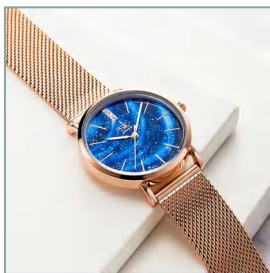
Model: 11K0105L
Watch Type: Women's Watch
Movement: PC21
Case Material: Alloy
Strap Material: Steel Mesh Strap
Clasp: Hook Buckle
Water Resistance: 3ATM
Dial Diameter: 34MM
Dial Thickness: 8.0MM
Strap Width: 16MM
Watch Net Weight: 52.5g
Price Tag: 188/268RMB



- ◆ Minimalistic geometric design
- ◆ Stainless steel mesh belt
- ◆ Japanese imported movement
- ◆ High-strength mineral glass



Model: 11K0103L
 Watch Type: Women's Watch
 Movement: PC21
 Case Material: Alloy
 Strap Material: PU Leather
 Strap / Steel Mesh Strap
 Buckle Type: Square Steel
 Buckle / Hook Buckle
 Water Resistance: 3ATM
 Dial Diameter: 32MM
 Dial Thickness: 6.5MM
 Strap Width: 16MM
 Watch Net Weight: 24.4g /
 48.5g
 Retail Price: 228 / 308 RMB



◆ 3D printing + enamel oil surface

◆ PU belt / steel mesh belt

◆ Japanese imported movement

◆ High-strength mineral glass



Model: 11K0102L
 Watch Type: Ladies' Watch
 Movement: PC20
 Case Material: Alloy
 Strap Material: Steel Mesh
 Clasp: Hook Buckle
 Water Resistance: 3ATM
 Dial Diameter: 33MM
 Dial Thickness: 6.0MM
 Strap Width: 12MM
 Watch Net Weight: 40g
 Price Tag: 268/348RMB



◆ Sunray pattern with diamond-set surface

◆ Stainless steel mesh strap

◆ Japanese imported movement

◆ High-strength mineral glass



Model: 11K0101L
 Watch Type: Women's Watch
 Movement: PC20
 Case Material: Alloy
 Strap Material: PU Leather
 Buckle Type: Square Steel Buckle
 Water Resistance: 3ATM
 Dial Diameter: 32MM
 Dial Thickness: 7.0MM
 Strap Width: 12MM
 Watch Net Weight: 23g
 Hang Tag Price: 188/208RMB



- ◆ Iridescent shell surface
- ◆ Butterfly pattern design
- ◆ Japanese imported movement
- ◆ High-strength mineral glass



Model: 11K0100L
Watch Type: Women's Watch
Movement: PC20
Case Material: Alloy
Strap Material: Stainless Steel Mesh
Clasp Type: Hook Buckle
Water Resistance: 3ATM
Dial Diameter: 32MM
Dial Thickness: 6.5MM
Strap Width: 10MM
Watch Net Weight: 42g
Retail Price: 228/308 RMB



- ◆ Oil pressure texture surface
- ◆ Exquisite design
- ◆ Japanese imported movement
- ◆ High-strength mineral glass



Model: 11K0099L
 Watch Type: Ladies' Watch
 Movement: PC21
 Case Material: Alloy
 Strap Material: PU Leather
 Strap
 Clasp: Square Steel Clasp
 Water Resistance: 3ATM
 Dial Diameter: 30MM
 Dial Thickness: 6.0MM
 Strap Width: 14MM
 Watch Net Weight: 22.5g
 Hang Tag Price: 208/218RMB



- ◆ Radiating pattern surface
- ◆ Comfortable belt
- ◆ Japanese imported movement
- ◆ High-strength mineral glass



Model: 11K0095L
 Watch Type: Ladies' Watch
 Movement: PC20
 Case Material: Alloy
 Strap Material: PU Leather
 Strap / Steel Mesh Strap
 Clasp Type: Square Steel
 Clasp / Hook Buckle
 Water Resistance: 3ATM
 Dial Diameter: 36MM
 Dial Thickness: 6.5MM
 Strap Width: 18MM
 Watch Net Weight: 60.2g
 Tag Price: 178/208/288 RMB



- ◆ Spray-painted semi-gloss sunray pattern dial surface
- ◆ Two-hand design
- ◆ Imported movement
- ◆ High-strength mineral glass



Model: 11K0094L
 Watch Type: Women's Watch
 Movement: PC20
 Case Material: Alloy
 Strap Material: Steel Mesh
 Clasp: Folding Clasp
 Waterproof: 3ATM
 Dial Diameter: 36MM
 Dial Thickness: 7.5MM
 Strap Width: 18MM
 Watch Net Weight: 59g
 Original Price: 268 RMB



- ◆ Corroded pattern surface
- ◆ Two-hand design
- ◆ Imported movement
- ◆ High-strength mineral glass



Model: 11K0093L
 Watch Type: Women's Watch
 Movement: PC20
 Case Material: Alloy
 Strap Material: Stainless Steel Mesh
 Clasp Type: Hook Buckle
 Water Resistance: 3ATM
 Dial Diameter: 30MM
 Dial Thickness: 6.5MM
 Strap Width: 14MM
 Watch Net Weight: 43.5g
 Hang Tag Price: 208/228RMB



◆ Sunburst pattern oil-pressed surface

◆ Stainless steel woven belt

◆ Imported movement

◆ High-strength mineral glass



Model: 11K0092L
Watch Type: Women's Watch
Movement: PC21
Case Material: Alloy
Strap Material: Alloy
Clasp: Double Push Clasp
Water Resistance: 3ATM
Dial Diameter: 32MM
Dial Thickness: 9.8MM
Strap Width: 14MM
Watch Net Weight: 59g
Original Price Tag: 298RMB



- ◆ River shell flashing
- ◆ Set watchband
- ◆ Imported movement
- ◆ High-strength mineral glass
- ◆ diamond surface



Model: 11K0091L
 Watch Type: Women's Watch
 Movement: PC20
 Case Material: Alloy
 Strap Material: PU Strap /
 Steel Mesh Strap
 Buckle Type: Square Steel
 Buckle / Hook Buckle
 Water Resistance: 3ATM
 Dial Diameter: 38MM
 Dial Thickness: 7.5MM
 Strap Width: 14MM
 Watch Net Weight: 54.5g
 Hang Tag Price: 228/238RMB



- ◆ Perforated surface
- ◆ Creative design
- ◆ Imported movement
- ◆ High-strength mineral glass



Model: 11K0090L
Watch Type: Women's Watch
Movement: PC20
Case Material: Alloy
Strap Material: PU Strap
Buckle Type: Square Steel
Buckle
Water Resistance: 3ATM
Dial Diameter: 40MM
Dial Thickness: 8.0 MM
Strap Width: 20MM
Watch Net Weight: 35g
Retail Price: 188RMB



- ◆ Perforated triangular
- ◆ Semi-gloss design
- ◆ Imported movement
- ◆ High-strength mineral glass surface



Model: 11K0089L
 Watch Type: Women's Watch
 Movement: PC20
 Case Material: Alloy
 Strap Material: Metal
 Clasp: Jewelry Clasp
 Water Resistance: 3ATM
 Dial Diameter: 34MM
 Dial Thickness: 9.0 MM
 Strap Width: 10MM
 Watch Net Weight: 44.5g
 Tag Price: 228RMB



- ◆ Circular sand pattern surface
- ◆ Bezel with sparkling diamonds
- ◆ Imported movement
- ◆ High-strength mineral glass



Model: 11K0088L
 Watch Type: Women's Watch
 Movement: PC20
 Case Material: Alloy
 Strap Material: PU Leather
 Strap / Steel Mesh Strap
 Buckle Type: Square Steel
 Buckle / Hook Buckle
 Water Resistance: 3ATM
 Dial Diameter: 38MM
 Dial Thickness: 7.5MM
 Strap Width: 14MM
 Watch Net Weight: 53g
 Retail Price: 188/198/268
 RMB



- ◆ Sunburst Texture
- ◆ Sparkling Diamond Design
- ◆ Imported movement
- ◆ High-strength mineral glass



Model: 11K0075L
 Watch Type: Women's Watch
 Movement: PC20
 Case Material: Alloy
 Strap Material: PU Leather
 Strap / Steel Mesh Strap
 Buckle Type: Square Steel
 Buckle / Hanging Buckle
 Waterproof: 3ATM
 Dial Diameter: 38MM
 Dial Thickness: 7.5 MM
 Strap Width: 14MM
 Watch Net Weight: 53g
 Retail Price: 188/198/268
 RMB



◆ Sunburst Texture

◆ Sparkling Diamond Design

◆ Imported movement

◆ High-strength mineral glass



Model: 11K0063L
Watch Type: Women's Watch
Movement: PC21
Case Material: Alloy
Strap Material: Stainless Steel Mesh
Clasp Type: Hook Buckle
Water Resistance: 3ATM
Dial Diameter: 32MM
Dial Thickness: 8.5 MM
Strap Width: 12MM
Watch Net Weight: 38g
Original Price Tag: 338 RMB



- ◆ Enamel bottom + Sparkling powder surface
- ◆ Stainless steel mesh belt
- ◆ Imported movement
- ◆ High-strength mineral glass



Model: 11K0062L
 Watch Type: Women's Watch
 Movement: PC21
 Case Material: Alloy
 Strap Material: Metal
 Clasp Type: Jewelry Clasp
 Water Resistance: 3ATM
 Dial Diameter: 34MM
 Dial Thickness: 6.0MM
 Strap Width: 16MM
 Watch Net Weight: 43.5g
 Price Tag: 158RMB



- ◆ Oil-pressured convex vertical stripes surface
- ◆ Exquisite jewelry clasp
- ◆ Imported movement
- ◆ High-strength mineral glass



Model: 11K0059L
 Watch Type: Women's Watch
 Movement: PC21
 Case Material: Alloy
 Strap Material: Steel Mesh
 Clasp Type: Hook Buckle
 Water Resistance: 3ATM
 Dial Diameter: 36MM
 Dial Thickness: 7.5MM
 Strap Width: 18MM
 Watch Net Weight: 55g
 Retail Price: 218/268 RMB



- ◆ High-end round sand large beveled surface implanted with genuine nails
- ◆ Stainless steel mesh belt
- ◆ Imported movement
- ◆ High-strength mineral glass



Model: 11K0056L
 Watch Type: Women's Watch
 Movement: PC21
 Case Material: Alloy
 Strap Material: PU Leather
 Strap / Steel Mesh Strap
 Buckle Type: Square Steel
 Buckle / Hook Clasp
 Water Resistance: 3ATM
 Dial Diameter: 38MM
 Dial Thickness: 7.0MM
 Strap Width: 14MM
 Watch Net Weight: 30/49.8g
 Hang Tag Price: 138/158 RMB



◆ Minimalist Surface ◆ PU Belt / Steel Mesh Belt ◆ Imported movement ◆ High-strength mineral glass



Model: 11K0039L
 Watch Type: Women's Watch
 Movement: PC21
 Case Material: Alloy
 Strap Material: PU Leather
 Strap / Steel Mesh Strap
 Buckle Type: Square Steel
 Buckle / Hook Buckle
 Waterproof: 3ATM
 Dial Diameter: 38MM
 Dial Thickness: 8.0MM
 Strap Width: 14MM
 Watch Net Weight: 29.5g
 Hangtag Price: 168/248 RMB



◆ Minimalist Surface ◆ PU Belt / Steel Mesh Belt ◆ Imported movement ◆ High-strength mineral glass



Model: 11K0006L
 Watch Type: Women's Watch
 Movement: PC21
 Case Material: Alloy
 Strap Material: PU Leather
 Strap / Steel Mesh Strap
 Clasp Type: Square Steel
 Clasp / Hook Buckle
 Water Resistance: 3ATM
 Dial Diameter: 30MM
 Dial Thickness: 7.5MM
 Strap Width: 14MM
 Net Weight of Watch: 22.47g
 Hang Tag Price:
 178/248/268RMB



- ◆ Wavy pattern surface
- ◆ Compact design
- ◆ Imported movement
- ◆ High-strength mineral glass