

# SK



K0200



K0199



K0197



K0196



K0195



K0194



K0193



K0192



K0191



K0190



K0189



K0188



K0187



K0185



K0184



K0182



K0181



K0180



K0178



K0177



K0176



K0175



K0174



K0173



K0172



K0171



K0170



K0169



K0168



K0166



K0165



K0164



K0163



K0162



K0158



K0156



K0155



K0153



K0152



K0151



K0150



K0149



K0148



K0147



K0146



K0144



K0143



K0142



K0140



K0139



K0138



K0137



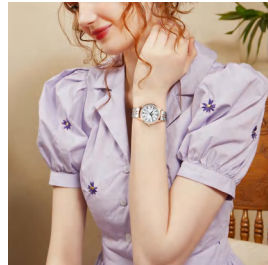
K0136



K0132



Model: 11K0200L  
Watch type: Women's watch  
Movement: 2015-6H单历  
Case material: Alloy  
Strap material: Five bead stainless steel strip  
Clasp: Suspension buckle  
Waterproof: 3ATM  
Dial diameter: 32MM  
Dial thickness: 7.5MM  
Strap width: 16x14MM  
weight: 57.8g





Model: 11K0199L  
Watch type: Women's watch  
Movement: 2035  
Case material: Alloy  
Strap material: Seven bead steel belt  
Clasp: double press box buckle  
Waterproof: 3ATM  
Dial diameter: 30MM  
Dial thickness: 7.5MM  
Strap width: 14x12MM  
weight: 56.5g





Model: 11K0197L  
Watch type: Women's watch  
Movement: 2035  
Case material: Alloy  
Strap material: Bamboo  
leather strap/stainless  
steel strap  
Waterproof: 3ATM  
Dial diameter: 30.5MM  
Dial thickness: 8.5MM  
Strap width: 14x12MM  
weight: 64.9/24.6g





Model: 11K0196L  
Watch type: Women's watch  
Movement: 2035  
Case material: Alloy  
Strap material: PU belt  
Clasp: Square steel buckle  
Waterproof: 3ATM  
Dial diameter: 22.5MM  
Dial thickness: 6.7MM  
Strap width: 10x8MM  
weight: 14.6g





Model: 11K0195L  
Watch type: Women's watch  
Movement: 2035  
Case material: Alloy  
Strap material: alloy watch band  
Clasp: Jewelry buckle  
Waterproof: 3ATM  
Dial diameter: 25MM  
Dial thickness: 6.5MM  
Strap width: 10x9MM  
weight: 35.5g





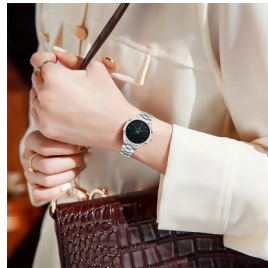


Model: 11K0194L  
Watch type: Women's watch  
Movement: 2035  
Case material: Alloy  
Strap material: Stainless steel mesh belt  
Clasp: Suspension buckle  
Waterproof: 3ATM  
Dial diameter: 30MM  
Dial thickness: 8MM  
Strap width: 14x14MM  
weight: 48.5g





Model: 11K0193L  
Watch type: Women's watch  
Movement: 2035  
Case material: Alloy  
Strap material: Strip steel  
Clasp: Double snap  
Waterproof: 3ATM  
Dial diameter: 33MM  
Dial thickness: 7.5MM  
Strap width: 16x14MM  
weight: 64g





Model: 11K0192L  
Watch type: Women's watch  
Movement: 2035  
Case material: Alloy  
Strap material: Leather strap + stainless steel mesh webbing  
Clasp: HookDouble press the safety buckle buckle  
Waterproof: 3ATM  
Dial diameter: 30MM  
Dial thickness: 10MM  
Strap width: 16x14MM  
weight:58.3g/35.3g





Model: 11K0191L  
Watch type: Women's watch  
Movement: 2035  
Case material: Alloy  
Strap material: Leather strap + stainless steel mesh webbing  
Clasp: HookDouble press the safety buckle buckle  
Waterproof: 3ATM  
Dial diameter: 30MM  
Dial thickness: 10MM  
Strap width: 16x14MM  
weight:58.3g/35.3g





Model: 11K0190L  
Watch type: Women's watch  
Movement: 2025  
Case material: Alloy  
Strap material: PU belt  
Clasp: Square steel buckle  
Waterproof: 3ATM  
Dial diameter: 32x28MM  
Dial thickness: 8MM  
Strap width: 14x12MM  
Watch net weight: 23g





Model: 11K0189L  
 Watch type: Women's watch  
 Movement: 2035  
 Case material: Alloy  
 Strap material: Stainless steel mesh strap  
 Clasp: Hook buckle  
 Waterproof: 3ATM  
 Dial diameter: 32.5MM  
 Dial thickness: 7MM  
 Strap width: 12MM  
 Watch net weight:  
 Hang tag price:



◆ Sunray sand pattern surface

◆ Japanese imported movement

◆ Stainless steel mesh strap

◆ High-strength mineral glass



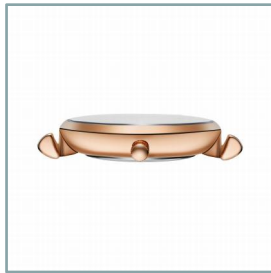
Model: 11K0188L  
 Type: Women's Watch  
 Movement: PC21  
 Case Material: Alloy  
 Strap Material: Stainless Steel Mesh Strap  
 Clasp: Hook Clasp  
 Water Resistance: 3ATM  
 Dial Diameter: 30MM  
 Dial Thickness: 6.5MM  
 Strap Width: 14MM  
 Net Weight of Watch:  
 Price Tag:



- ◆ Sandblasted corrosion pattern surface
- ◆ Japanese imported movement
- ◆ Stainless steel mesh strap
- ◆ High-strength mineral glass



Model: 11K0187L  
 Watch type: Women's watch  
 Movement: 2035  
 Case material: Alloy  
 Strap material: Stainless steel mesh strap  
 Buckle: Safety buckle  
 Waterproof: 3ATM  
 Dial diameter: 32MM  
 Dial thickness: 6.2MM  
 Strap width: 14MM  
 Watch net weight: 43.6g  
 Price tag: 358RMB



◆ Gradient inlaid diamond surface

◆ Japanese imported movement

◆ Sparkling diamond design

◆ High-strength mineral glass





Model: 11K0185L  
 Type: Women's Watch  
 Movement: PC21  
 Case Material: Alloy  
 Strap Material: PU Leather  
 Strap  
 Clasp: Square Steel Clasp  
 Waterproof: 3ATM  
 Dial Diameter: 21\*27.5MM  
 Dial Thickness: 6.1MM  
 Strap Width: 10MM  
 Net Weight: 17.2g  
 Retail Price: 268RMB



◆ Sun pattern sand pattern surface

◆ Japanese imported movement

◆ Comfortable strap

◆ High-strength mineral glass



Model: 11K0184L

Watch type: Women's watch

Movement: PC21

Case material: Alloy

Strap material: PU leather strap

Clasp: Square steel buckle

Waterproof: 3ATM

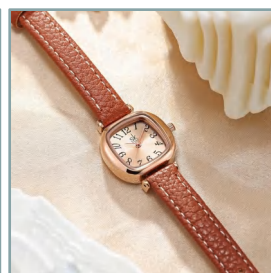
Dial diameter: 23.5\*22MM

Dial thickness: 7.8MM

Strap width: 10MM

Watch net weight: 16g

Tag price: 248RMB



◆ Sun pattern sand pattern surface

◆ Japanese imported movement

◆ Comfortable strap

◆ High-strength mineral glass



Model: 11K0182L  
 Watch Type: Women's Watch  
 Movement: 2053  
 Case Material: Alloy  
 Strap Material: Stainless Steel Solid Core Strap  
 Clasp: Double-press Butterfly Clasp  
 Water Resistance: 3ATM  
 Dial Diameter: 32MM  
 Dial Thickness: 6.5MM  
 Strap Width: 14MM  
 Net Weight of Watch:  
 Price Tag:



- ◆ Glitter film surface /Shell surface
- ◆ Japanese imported movement
- ◆ Stainless steel solid core strip
- ◆ High-strength mineral glass



Model: 11K0181L  
 Watch Type: Women's Watch  
 Movement: PC20  
 Case Material: Alloy  
 Strap Material: PU Leather  
 Strap  
 Clasp: Square Steel Buckle  
 Water Resistance: 3ATM  
 Dial Diameter: 32MM  
 Dial Thickness: 5.6MM  
 Strap Width: 14MM  
 Watch Net Weight: 24g  
 Price Tag: 258/268/278RMB



- ◆ Oil spray semi-gloss surface /sun pattern sand surface /iridescent river shell surface
- ◆ Japanese imported movement
- ◆ Comfortable strap
- ◆ High-strength mineral glass



Model: 11K0180L  
 Watch type: Women's watch  
 Movement: PC21  
 Case material: Alloy  
 Strap material: Stainless steel/PU leather strap  
 Clasp: Square steel clasp  
 Double press box clasp  
 Water resistance: 3ATM  
 Dial diameter: 32MM  
 Dial thickness: 6.2MM  
 Strap width: 14MM  
 Watch net weight: 62g/24g  
 Tag price: 308/328/338  
 358/408RMB



- ◆ Sand pattern + 3D printing + enamel surface
- ◆ Japanese imported movement
- ◆ Stainless steel strip /PU belt
- ◆ High-strength mineral glass



Model: 11K0178L  
 Watch Type: Women's Watch  
 Movement: PC21  
 Case Material: Alloy  
 Strap Material: Bamboo  
 Joint Steel Strap  
 Clasp: Safety Clasp  
 Water Resistance: 3ATM  
 Dial Diameter: 22.5\*22.5MM  
 Dial Thickness: 6.1MM  
 Strap Width: 10MM  
 Net Weight of the Watch:  
 32.9g  
 Price Tag: 278/328/368RMB



- ◆ Sunray pattern surface
- ◆ Square dial design
- ◆ Japanese imported movement
- ◆ Brand new bamboo joint steel strap
- ◆ High-strength mineral glass



Model: 11K0177L  
 Type: Women's Watch  
 Movement: PC21  
 Case Material: Alloy  
 Strap Material: Stainless Steel Strap from Axonau  
 Genuine Leather Strap  
 Clasp: Safety Buckle/Earth Buckle  
 Waterproof: 3ATM  
 Dial Diameter: 21.5\*27.5MM  
 Dial Thickness: 6.1MM  
 Strap Width: 10MM  
 Watch Net Weight: 35.4g/18.3g  
 Price Tag: 338/368/438RMB



- ◆ Sand pattern surface/river shell surface /3D printing + enamel oil surface /single nail surface
- ◆ Japanese imported movement
- ◆ Brand new bamboo joint steel strap
- ◆ High-strength mineral glass



Model: 11K0176L  
 Watch Type: Women's watch  
 Movement: PC21  
 Case Material: Alloy  
 Strap Material: Bamboo steel strip  
 Clasp: Hook buckle  
 Waterproof: 3ATM  
 Dial Diameter: 24.5\*24.5MM  
 Strap Width: 12MM  
 Net Weight: 43.6g  
 Tag Price: 288/328 RMB



- ◆ Sun-ray sand-pattern surface
- ◆ Japanese imported movement
- ◆ Bamboo joint steel strip belt
- ◆ High-strength mineral glass





Model: 11K0175L  
Watch Type: Women's Watch  
Movement: PC21  
Case Material: Alloy  
Strap Material: PU Leather Strap  
Buckle: Square Steel Buckle  
Water Resistance: 3ATM  
Dial Diameter: 23\*26.5MM  
Dial Thickness: 10MM  
Strap Width: 12MM  
Watch Net Weight: 18.8g  
Retail Price: 268 RMB



- ◆ Sun pattern + sandblasted surface
- ◆ Japanese imported movement
- ◆ Comfortable strap
- ◆ High-strength mineral glass



Model: 11K0174L  
 Type: Women's Watch  
 Movement: PC21  
 Case Material: Alloy  
 Strap Material: Stainless  
 Steel Strap with Bamboo  
 Sections  
 Buckle: Hook Buckle  
 Water Resistance: 3ATM  
 Dial Diameter: 28\*30.5MM  
 Dial Thickness: 7MM  
 Strap Width: 12MM  
 Watch Net Weight: 49.2g  
 Retail Price: 228/268/308  
 RMB



◆ Sun-embossed sand grain surface

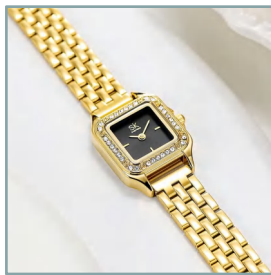
◆ Japanese imported movement

◆ Bamboo section steel strip belt

◆ High-strength mineral glass



Model: 11K0173L  
 Watch type: Women's watch  
 Movement: 2025  
 Case material: Alloy  
 Strap material: Stainless steel sheet  
 Clasp: Double press buckle  
 Waterproof: 3ATM  
 Dial diameter: 22.5\*22.5MM  
 Dial thickness: 6.5MM  
 Strap width: 12MM  
 Net weight of watch: 48g  
 Price tag: 268/348RMB



- ◆ Sunray sand grain surface
- ◆ Japanese imported movement
- ◆ Stainless steel strip band
- ◆ High-strength mineral glass



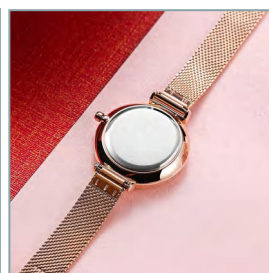
Model: 11K0172L  
 Watch type: Women's watch  
 Movement: 2035  
 Case material: Alloy  
 Strap material: Stainless steel strap  
 Clasp: Double push clasp  
 Waterproof: 3ATM  
 Dial diameter: 34.5MM  
 Dial thickness: 6.1MM  
 Strap width: 14MM  
 Watch weight: 64g  
 Hang tag price: 278/358RMB



- ◆ Sunburst iridescent surface
- ◆ Cherry blossom element design
- ◆ Japanese imported movement
- ◆ Steel strap
- ◆ High-strength mineral glass



Model: 11K0171L  
 Watch Type: Women's Watch  
 Movement: PC21  
 Case Material: Alloy  
 Strap Material: Stainless Steel Mesh Strap  
 Grain Leather Strap  
 Buckle Type: Hanging Buckle  
 Water Resistance: 3ATM  
 Dial Diameter: 32.5MM  
 Dial Thickness: 7.0MM  
 Strap Width: 12MM  
 Watch Net Weight: 23.5/43g  
 Retail Price: 258/308RMB



◆ 3D printing surface

◆ Printed pattern element design

◆ Japanese imported movement

◆ High-strength mineral glass



Model: 11K0170L  
Type: Women's Watch  
Movement: 2035  
Case Material: Alloy  
Strap Material: Stainless Steel Mesh Strap  
Clasp: Hanging Buckle  
Waterproof: 3ATM  
Dial Diameter: 22\*31MM  
Dial Thickness: 7.5MM  
Strap Width: 10MM  
Watch Net Weight: 33.85g  
Hang Tag Price: 278/368RMB



- ◆ Sun-ray surface
- ◆ Bezel with full diamond design
- ◆ Japanese imported movement
- ◆ High-strength mineral glass



Model: 11K0169L  
Watch Type: Women's Watch  
Movement: 2025  
Case Material: Alloy  
Strap Material: Stainless Steel Mesh Strap  
Buckle: Hook Buckle  
Water Resistance: 3ATM  
Dial Diameter: 30MM  
Dial Thickness: 6.5MM  
Strap Width: 12MM  
Watch Net Weight: 42.4g  
Hangtag Price: 278/368RMB



- ◆ Sun-ray dial
- ◆ Bezel with full diamond design
- ◆ Japanese imported movement
- ◆ High-strength mineral glass



Model: 11K0168L  
 Watch type: Women's watch  
 Movement: 2025  
 Case material: Alloy  
 Strap material: PU strap  
 Stainless steel mesh strap  
 Clasp: Hanging  
 buckle/square steel buckle  
 Waterproof: 3ATM  
 Dial diameter: 28MM  
 Dial thickness: 7.5MM  
 Strap width: 10MM  
 Watch net weight: 21.2g  
 Tag price: 288/368RM



- ◆ Sparkling glitter and diamond surface
- ◆ PU belt/stainless steel mesh belt
- ◆ Japanese imported movement
- ◆ High-strength mineral glass





Model: 11K0166L  
 Watch Type: Women's Watch  
 Movement: 2025  
 Case Material: Alloy  
 Strap Material: Silicone  
 Strap  
 Clasp: Square Steel Clasp  
 Water Resistance: 3ATM  
 Dial Diameter: 28MM  
 Dial Thickness: 7.5MM  
 Strap Width: 10MM  
 Watch Net Weight: 34.95g  
 Price Tag: 238/248RMB



- ◆ Silicone watch strap
- ◆ Green luminous hands
- ◆ Japanese imported movement
- ◆ High-strength mineral glass



Model: 11K0165L  
 Watch Type: Women's Watch  
 Movement: 2025  
 Case Material: Alloy  
 Strap Material: Silicone  
 Clasp: Square Steel Buckle  
 Water Resistance: 3ATM  
 Dial Diameter: 19.5\*27MM  
 Dial Thickness: 6.5MM  
 Strap Width: 14MM  
 Net Weight of the Watch:  
 21.6g  
 Hang Tag Price: 228RMB



- ◆ Small square table design
- ◆ Surface with lines
- ◆ Japanese imported movement
- ◆ High-strength mineral glass



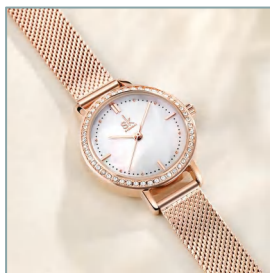
Model: 11K0164L  
 Watch type: Women's watch  
 Movement: VJ32-3H  
 Case material: Alloy  
 Strap material: Double-layer leather strap  
 Buckle: Square steel buckle  
 Water resistance: 3ATM  
 Dial diameter: 34MM  
 Dial thickness: 9.5MM  
 Strap width: 18MM  
 Net weight of watch: 48.19g  
 Tag price: 328RMB



- ◆ Design of a moving star diamond dial
- ◆ Double-layer watch strap
- ◆ Japanese Seiko single calendar movement
- ◆ High-strength mineral glass



Model: 11K0163L  
Watch Type: Women's Watch  
Movement: PC21  
Case Material: Alloy  
Strap Material: Stainless Steel Mesh Strap  
Clasp: Hook Buckle  
Water Resistance: 3ATM  
Dial Diameter: 30MM  
Dial Thickness: 6.5MM  
Strap Width: 12MM  
Watch Net Weight: 39.8g  
Price Tag: 288RMB



◆ Iridescent shell surface

◆ Stainless steel mesh band

◆ Japanese imported movement

◆ High-strength mineral glass



Model: 11K0162L  
Watch type: Women's watch  
Movement: PC21  
Case material: Alloy  
Strap material: Metal strap  
Clasp: Double press box clasp  
Waterproof: 3ATM  
Dial diameter: 32MM  
Dial thickness: 8MM  
Strap width: 14MM  
Net weight of watch: 69.5g  
Hang tag price: 328RMB



◆ Full diamond design

◆ Metal strap

◆ Japanese imported movement

◆ High-strength mineral glass



Model: 11K0158L  
 Type: Women's watch  
 Movement: PC21  
 Case material: Alloy  
 Strap material: PU leather strap/steel mesh strap  
 Buckle: Hook buckle  
 Water resistance: 3ATM  
 Dial diameter: 36MM  
 Dial thickness: 6.2MM  
 Strap width: 12MM  
 Net weight of the watch: 43.6g  
 Price tag: 218RMB



- ◆ Printed surface
- ◆ PU/stainless steel mesh belt
- ◆ Japanese imported movement
- ◆ High-strength mineral glass



Model: 11K0156L  
 Watch type: Women's watch  
 Movement: 2035  
 Case material: Alloy  
 Strap material: Stainless steel  
 Clasp: Double push button  
 Water resistance: 3ATM  
 Dial diameter: 33MM  
 Dial thickness: 10.5MM  
 Strap width: 17MM  
 Watch net weight: 60.1g  
 Retail price: 338RMB



◆ Sunburst pattern surface

◆ Bezel set with sparkling diamonds

◆ Japanese imported movement

◆ High-strength mineral glass



Model: 11K0155L  
 Watch type: Women's watch  
 Movement: 2035  
 Case material: Alloy  
 Strap material: PU leather strap  
 Clasp: Square steel clasp  
 Water resistance: 3ATM  
 Dial diameter: 22\*27MM  
 Dial thickness: 5.6MM  
 Strap width: 14MM  
 Watch net weight: 21.4g  
 Hang tag price: 288/298RMB



- ◆ Simple and classic surface
- ◆ Square dial design
- ◆ Japanese imported movement
- ◆ High-strength mineral glass





Model: 11K0153L  
Watch Type: Women's Watch  
Movement: 2035  
Case Material: Alloy  
Strap Material: PU Leather  
Clasp: Square Steel Buckle  
Waterproof: 3ATM  
Dial Diameter: 29MM  
Dial Thickness: 6.5MM  
Strap Width: 10MM  
Watch Net Weight: 20.94g  
Price Tag: 208/228RMB



◆ Metallic texture surface

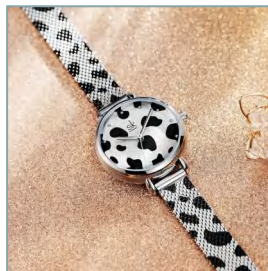
◆ Artistic curve design

◆ Japanese imported movement

◆ High-strength mineral glass



Model: 11K0152L  
 Watch Type: Women's Watch  
 Movement: 2035  
 Case Material: Alloy  
 Strap Material: Steel Mesh  
 Strap  
 Clasp: Hanging Buckle  
 Water Resistance: 3ATM  
 Dial Diameter: 28MM  
 Dial Thickness: 6.5MM  
 Strap Width: 10MM  
 Watch Weight: 35.53g  
 Retail Price: 268/348RMB



- ◆ Zebra stripe surface
- ◆ Leopard print element design
- ◆ Japanese imported movement
- ◆ High-strength mineral glass



Model: 11K0151L

Watch type: Women's watch

Movement: 2035

Case material: Alloy

Strap material: PU leather strap / steel mesh strap

Clasp: Square steel clasp / hanging buckle

Waterproof: 3ATM

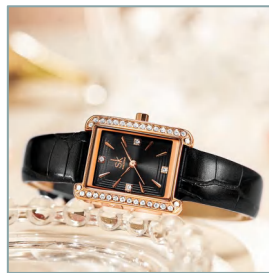
Dial diameter: 23\*29MM

Dial thickness: 7.2MM

Strap width: 14MM

Net weight of watch:  
22.73g

Price tag: 248/328RMB



◆ Sunburst pattern surface

◆ Square watch design

◆ Japanese imported movement

◆ High-strength mineral glass



Model: 11K0150L  
 Watch Type: Women's watch  
 Movement: 2035/2015  
 Case Material: Alloy  
 Strap Material: Genuine leather strap/stainless steel strap  
 Buckle: Square steel buckle  
 Water Resistance: 3ATM  
 Dial Diameter: 32MM  
 Dial Thickness: 7.5MM  
 Strap Width: 16MM  
 Net Weight of Watch: 56.8g/29.9g  
 Price Tag: 278/288/308 328/338RMB



- ◆ Classic surface
- ◆ Calendar function
- ◆ Japanese imported movement
- ◆ High-strength mineral glass



Model: 11K0149L  
 Watch Type: Women's Watch  
 Movement: 2035  
 Case Material: Alloy  
 Strap Material: PU Leather  
 Buckle: Square Steel  
 Buckle  
 Waterproof: 3ATM  
 Dial Diameter: 32MM  
 Dial Thickness: 6.5MM  
 Strap Width: 12MM  
 Watch Net Weight: 22g  
 Hangtag Price: 238RMB



- ◆ Oil pressure convex R surface
- ◆ Printed design
- ◆ Japanese imported movement
- ◆ High-strength mineral glass



Model: 11K0148L  
 Type: Women's Watch  
 Movement: 2035  
 Case Material: Alloy  
 Strap Material: PU Leather  
 Buckle: Square Steel Buckle  
 Water Resistance: 3ATM  
 Dial Diameter: 26.5MM  
 Dial Thickness: 6.5MM  
 Strap Width: 10MM  
 Watch Net Weight: 19.66g  
 Tag Price: 218/238 RMB



- ◆ Radiating iridescent surface
- ◆ Up floral design
- ◆ Japanese imported movement
- ◆ High-strength mineral glass



Model: 11K0147L  
 Watch type: Women's watch  
 Movement: 2035  
 Case material: Alloy  
 Strap material: PU leather strap/stainless steel mesh strap  
 Clasp: Square steel buckle/hanging buckle  
 Waterproof: 3ATM  
 Dial diameter: 21.5\*28.5MM  
 Dial thickness: 7MM  
 Strap width: 12MM  
 Watch net weight: 20.64g/40.38g  
 Tag price: 268/348RMB



- ◆ Horizontal striped surface
- ◆ Small square table design
- ◆ Japanese imported movement
- ◆ High-strength mineral glass



Model: 11K0146L  
Watch Type: Women's Watch  
Movement: 2035  
Case Material: Alloy  
Strap Material: Steel Mesh Strap  
Clasp: Hook Buckle  
Water Resistance: 3ATM  
Dial Diameter: 34MM  
Dial Thickness: 7.0MM  
Strap Width: 14MM  
Watch Net Weight: 29g  
Hangtag Price: 218/248RMB



- ◆ Sunray dial
- ◆ Printed pattern design
- ◆ Japanese imported movement
- ◆ High-strength mineral glass





Model: 11K0144L  
Watch Type: Women's Watch  
Movement: 2035  
Case Material: Alloy  
Strap Material: PU Leather  
Strap  
Buckle: Square Steel Buckle  
Waterproof: 3ATM  
Dial Diameter: 32MM  
Dial Thickness: 6.5MM  
Strap Width: 16MM  
Watch Net Weight: 25.67g  
Hangtag Price: 238 RMB



- ◆ Smooth sand pattern surface
- ◆ Snake pattern belt
- ◆ Japanese imported movement
- ◆ High-strength mineral glass



Model: 11K0143L  
 Type: Women's watch  
 Movement: 2035  
 Case material: Alloy  
 Strap material: Steel mesh strap  
 Buckle: Hook buckle  
 Waterproof: 3ATM  
 Dial diameter: 32MM  
 Dial thickness: 7.0MM  
 Strap width: 12MM  
 Watch weight: 44g  
 Retail price: 298RMB



◆ Textured shimmer surface

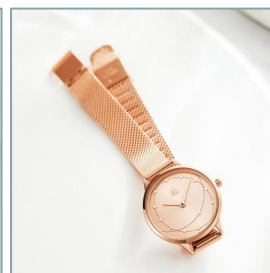
◆ Stainless steel mesh belt

◆ Japanese imported movement

◆ High-strength mineral glass



Model: 11K0142L  
Watch Type: Women's watch  
Movement: 2035  
Case Material: Alloy  
Strap Material: Steel mesh strap  
Clasp: Hook buckle  
Waterproof: 3ATM  
Dial Diameter: 31MM  
Dial Thickness: 6.5MM  
Strap Width: 12MM  
Watch Net Weight: 37.9g  
Price Tag: 298RMB



◆ Sunburst dial

◆ Stainless steel mesh strap

◆ Japanese imported movement

◆ High-strength mineral glass



Model: 11K0140L  
 Watch type: Women's watch  
 Movement: PC21  
 Case material: Alloy  
 Strap material: Stainless steel mesh  
 Clasp: Hook buckle  
 Waterproof: 3ATM  
 Dial diameter: 36MM  
 Dial thickness: 8.0MM  
 Strap width: 14MM  
 Watch net weight: 51.85g  
 Retail price:  
 268/308/348RMB



- ◆ Sun pattern flashing diamond surface
- ◆ Stainless steel woven strap
- ◆ Japanese imported movement
- ◆ High-strength mineral glass



Model: 11K0139L  
 Watch Type: Women's watch  
 Movement: PC21  
 Case Material: Alloy  
 Strap Material: Stainless steel mesh strap/PU leather strap  
 Clasp: Hook buckle/Square steel buckle  
 Waterproof: 3ATM  
 Dial Diameter: 32MM  
 Dial Thickness: 7.0MM  
 Strap Width: 12MM  
 Net Weight: 42.2g  
 Retail Price: 278RMB



- ◆ Sunburst pattern
- ◆ Screen printed maple leaf design
- ◆ Japanese imported movement
- ◆ High-strength mineral glass



Model: 11K0138L  
Type: Women's Watch  
Movement: PC21  
Case Material: Alloy  
Strap Material: Steel Mesh  
Buckle: Hook Buckle  
Water Resistance: 3ATM  
Dial Diameter: 36MM  
Dial Thickness: 7.5MM  
Strap Width: 16MM  
Net Weight: 58.93g  
Retail Price: 278RMB



- ◆ Oil pressure convex R surface
- ◆ Stainless steel woven belt
- ◆ Japanese imported movement
- ◆ High-strength mineral glass



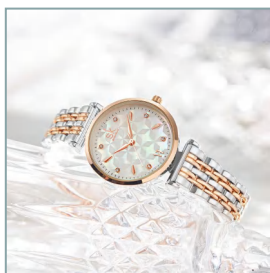
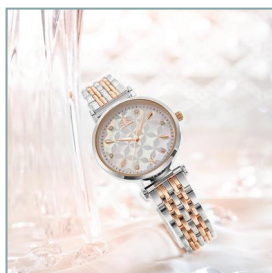
Model: 11K0137L  
 Watch Type: Women's Watch  
 Movement: PC21  
 Case Material: Alloy  
 Strap Material: PU Leather  
 Strap/Stainless Steel Mesh  
 Strap  
 Clasp: Square Steel  
 Buckle/Hanging Buckle  
 Water Resistance: 3ATM  
 Dial Diameter: 38MM  
 Dial Thickness: 7.5MM  
 Strap Width: 14MM  
 Watch Net Weight:  
 27.0g/50.7G  
 Hangtag Price: 198/268RMB



- ◆ Marble texture surface
- ◆ 3D printing technology
- ◆ Japanese imported movement
- ◆ High-strength mineral glass



Model: 11K0136L  
 Type: Women's watch  
 Movement: PC20  
 Case material: Alloy  
 Strap material: Metal  
 Clasp: Double press clasp  
 Water resistance: 3ATM  
 Dial diameter: 32MM  
 Dial thickness: 9.5MM  
 Strap width: 13MM  
 Net weight of watch: 61.3g  
 Price tag: 228/278RMB



- ◆ Rainbow river shell surface
- ◆ Four-leaf clover design
- ◆ Japanese imported movement
- ◆ High-strength mineral glass





Model: 11K0132L  
 Watch type: Women's watch  
 Movement: PC20  
 Case material: Alloy  
 Strap material: Steel mesh  
 Clasp: Hanging buckle  
 Waterproof: 3ATM  
 Dial diameter: 38MM  
 Dial thickness: 9.0MM  
 Strap width: 14MM  
 Watch net weight: 55.6g  
 Tag price: 238/308RMB



◆ Sunray dial

◆ Stainless steel mesh strap

◆ Japanese imported movement

◆ High-strength mineral glass